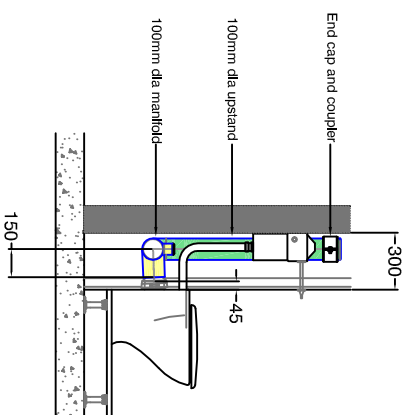
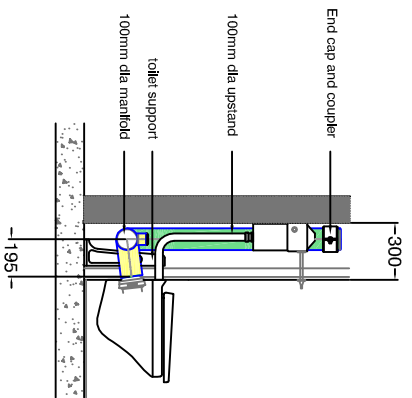


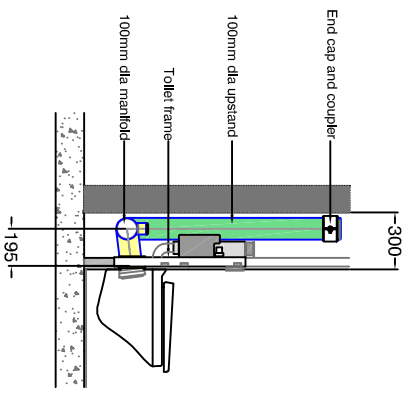
DRAINAGE SOLUTIONS - MANIFOLDS



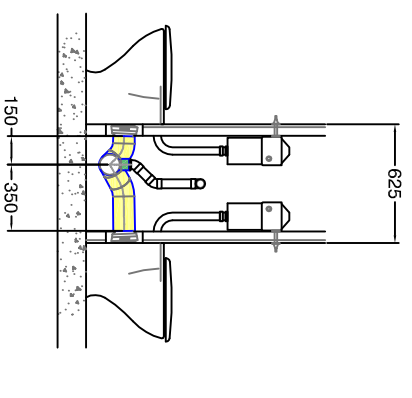
Typical section through duct (Contour wc)



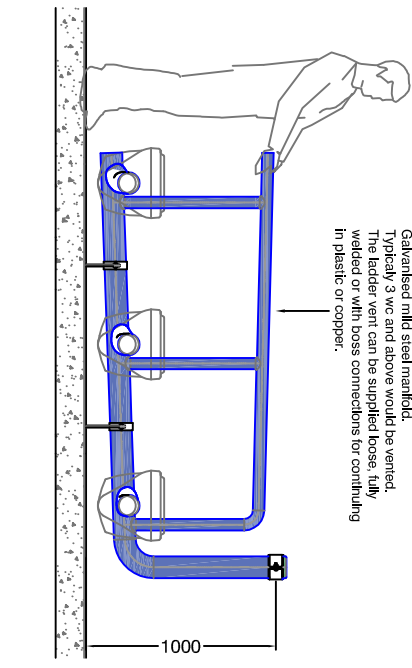
Typical section through duct (Braemar wc)



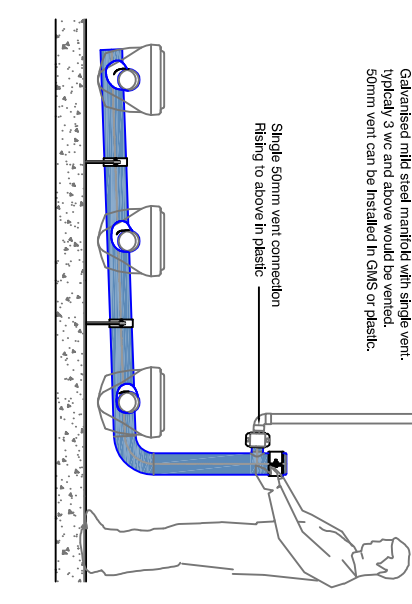
Typical section through duct with wc support frame



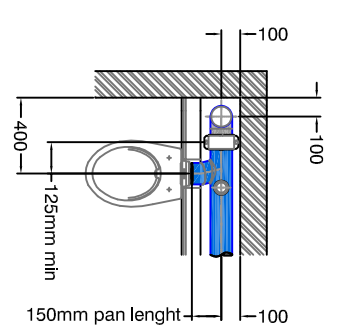
Typical section through duct back to back toilets



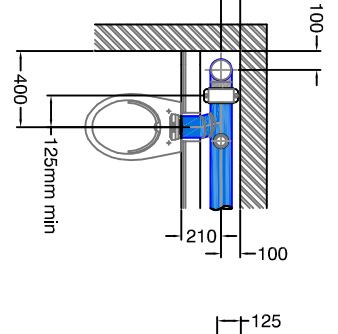
Galvanised mild steel manifold. Typically 3 wc and above would be vented. The ladder vent can be supplied hose, fully welded or with boss connections for continuing in plastic or copper.



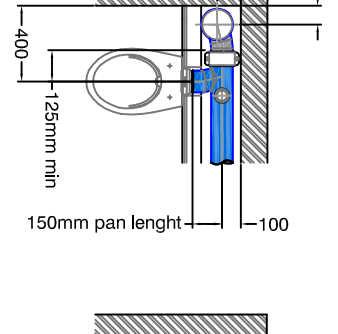
Galvanised mild steel manifold with single vent. Typically 3 wc and above would be vented. 50mm vent can be installed in GMS or plastic.



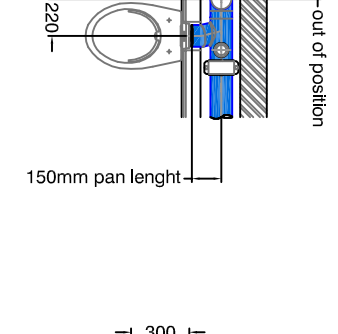
Minimum duct and wc layout. 100mm dia stack in corner of duct.



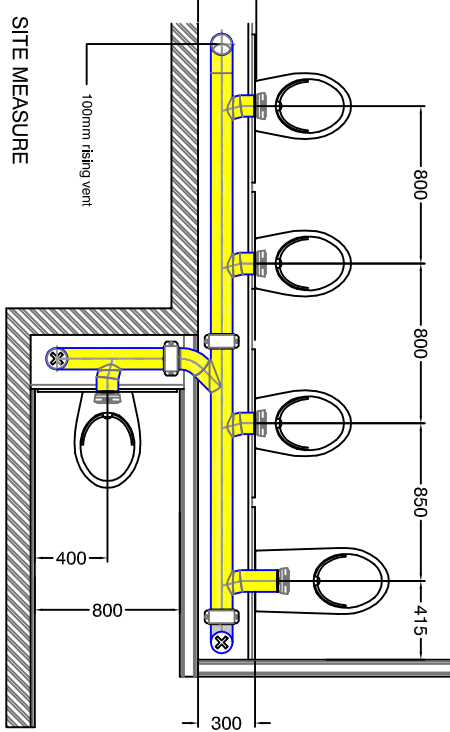
Minimum duct and wc layout. 100mm dia stack in corner of duct.



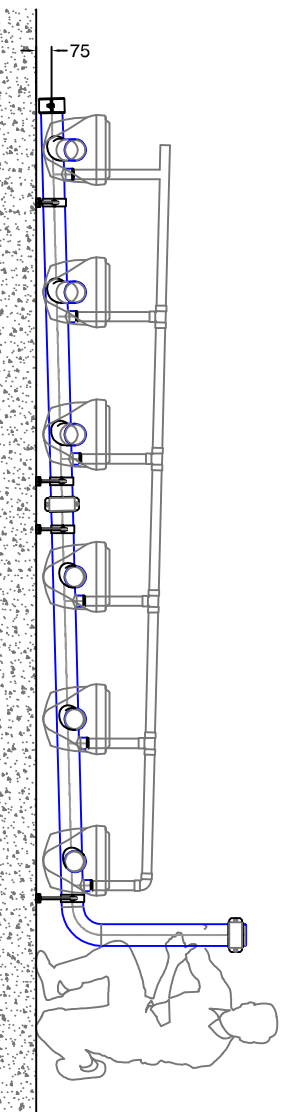
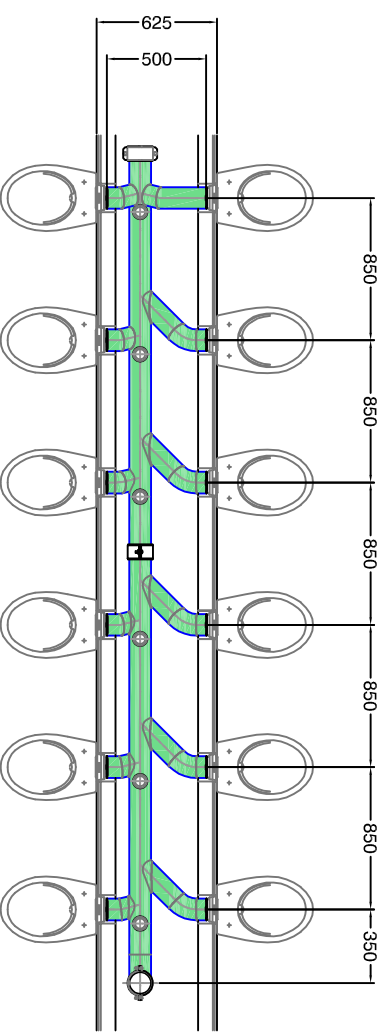
Minimum duct and wc layout. 150mm dia GMS stack in corner of duct.



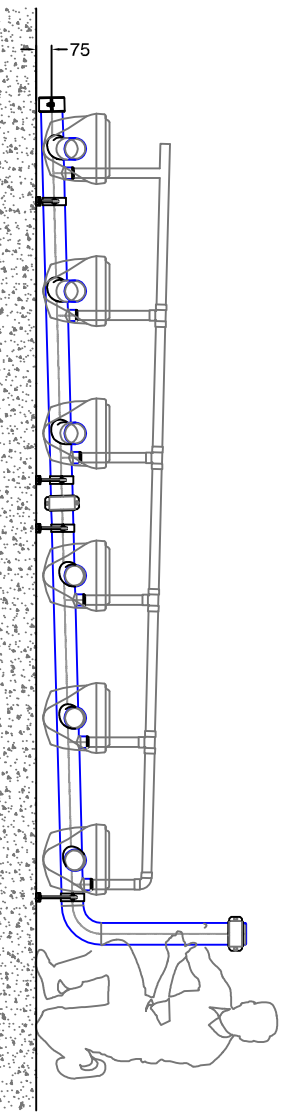
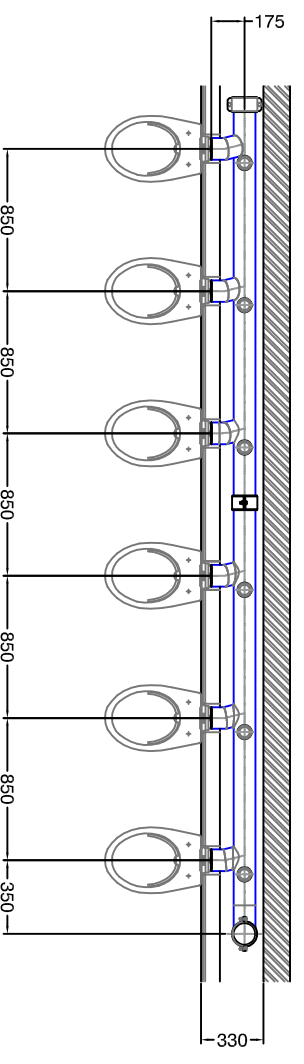
Stack and first wc fabricated together to achieve minimum distance between drain and wc. System would need to be offset to avoid this.



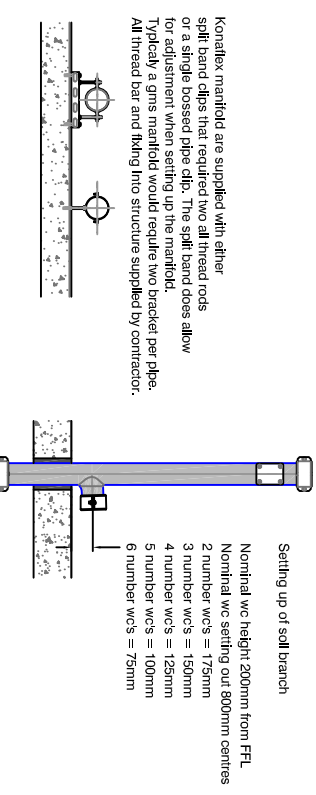
SITE MEASURE
Koralix will site measure any manifolds that can't be manufactured from drawings required. Koralix will then supply a detailed drawing of approval.



Galvanised Mild Steel wc manifold allows up to 6 toilets to run into a single pipe above the slab, with no need for raised floor on a back to back manifold. 12 rollers can be served. Detail shown is based on a toilet layout using Contour wcs. Note: The 850mm wc distance is only a nom dimension for drawing purposes, wc positions are as the builders work layout.

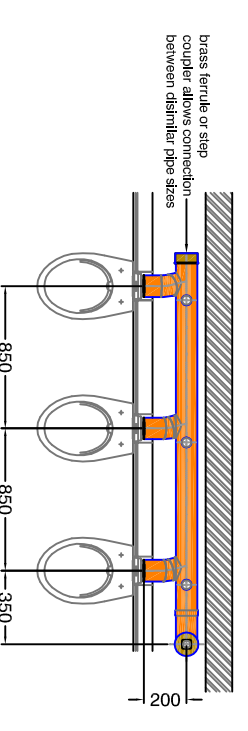


Galvanised Mild Steel wc manifold allows up to 6 toilets to run into a single pipe above the slab, with no need for raised floor. Detail shown is based on a toilet layout using Contour wcs. Note: The 850mm wc distance is only a nom dimension for drawing purposes, wc positions are as the builders work layout.

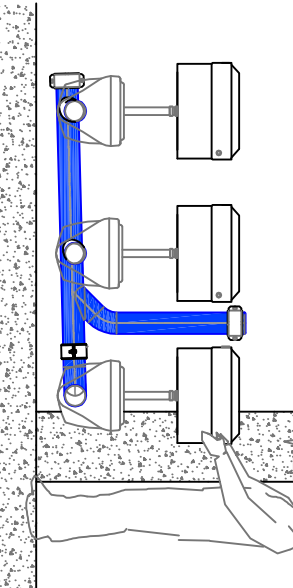
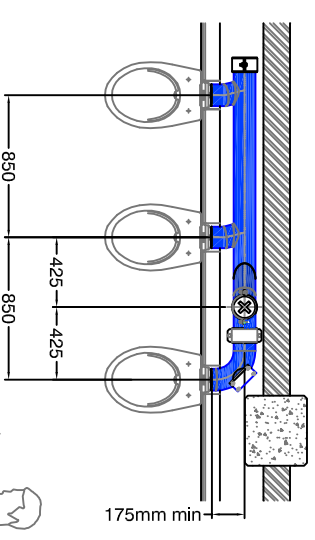


Setting up of scall branch

Koralix manifolds are supplied with either split band clips that require two all thread rods or a single bossed pipe clip. The split band does allow for adjustment when setting up the manifold. Typically a gms manifold would require two brackets per pipe. All thread bar and fitting into structure supplied by contractor.



Copper manifolds fabricated offsite from 108mm BS EN 1057-R250 tube. No hot works on site!



The above detail shows a GMS manifold with the upturned rodding point in the centre of the two toilets. This allows rodding down the manifold when the building structure obstructs the end of the manifold.